

Installation of the SOUNDLIGHT PCMCIA DMX Interface

Please elect a free PCMCIA slot and gently insert the PCMCIA card, face up..

IMPORTANT: Please make sure, that your computer is **switched off** when inserting or removing PCMCIA cards.

Start Windows and select SETTINGS - CONTROL PANEL.

Click the ADD NEW HARDWARE symbol.

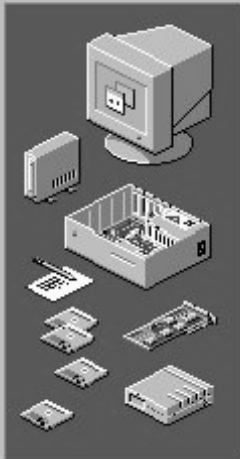


Add New Hardware



As the device to be installed is known, we do not need automatic hardware detection. Please select NO, THE DEVICE IS NOT IN THE LIST.

Add New Hardware Wizard



Windows can now search for hardware that is not Plug and Play compatible, or you can select your hardware from a list.

When Windows detects new hardware, it automatically determines the current settings for the device and installs the correct driver. For this reason it is strongly recommended that you have Windows search for your new hardware.

Do you want Windows to search for your new hardware?

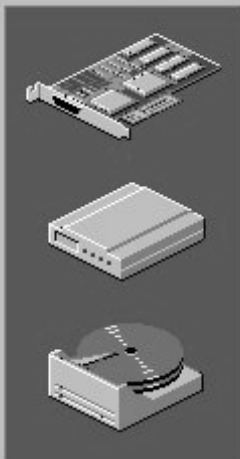
- Yes (Recommended)
- No, I want to select the hardware from a list

< Back

Next >

Cancel

Add New Hardware Wizard



Select the type of hardware you want to install.

Hardware types:

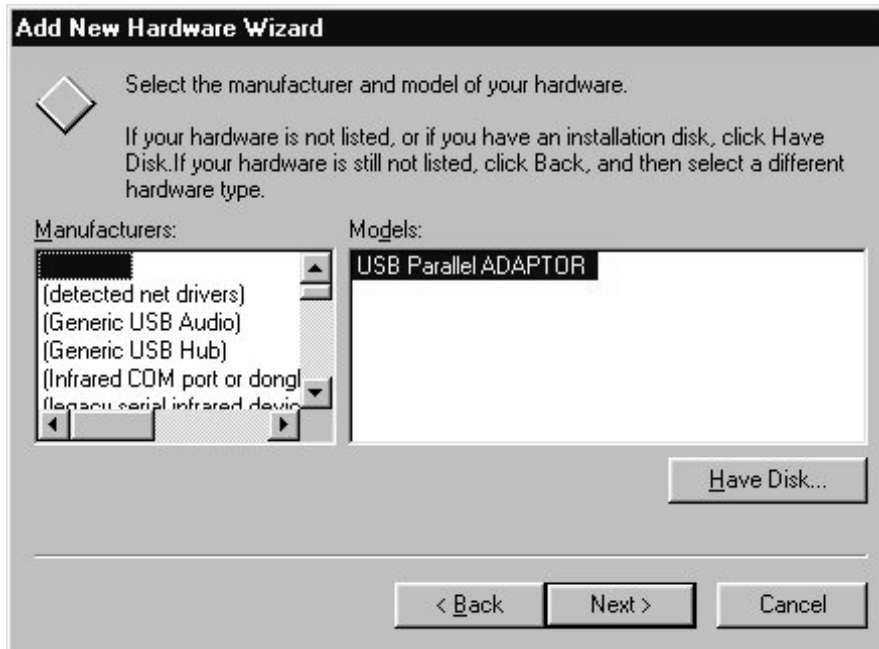
- Modem
- Monitors
- Mouse
- Multi-function adapters
- Network adapters
- Other devices**
- OtherDevices
- PCMCIA socket
- Ports (COM & LPT)
- Printer

< Back

Next >

Cancel

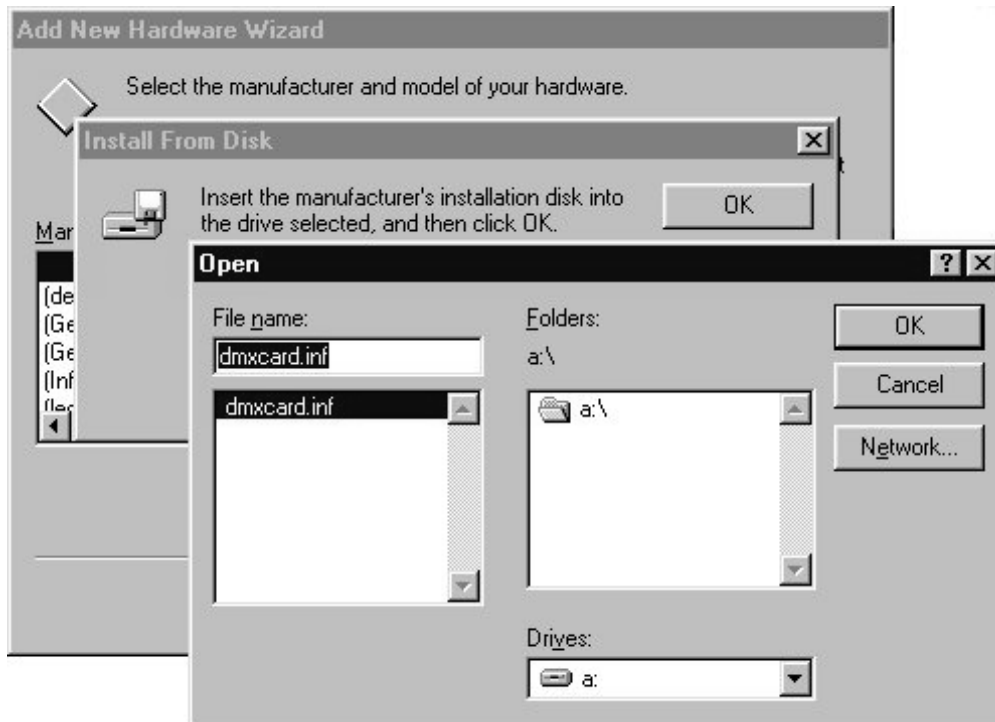
Form the list please select OTHER DEVICES.



As the PCMCIA DMX Interface is not contained within the list, select HAVE DISK, then BROWSE..



Select the DMXCARD.INF file, then Confirm with NEXT, NEXT and COMPLETE.





This completes the installation of the SOUNDLIGHT PCMCIA Interface. You may now run the demos and diagnostic tools and access the interface.